

Level 3 BTEC National Extended Certificate Health & Social Care

What will I be studying?	Page 2
Recommended Netflix Programmes	Page 3
Other recommended watching	Page 4 & 5
Recommended Reading	Page 6 & 7
Media Task	Page 8
Learning Log	Page 9
Key word Glossary	Page 10 & 11
History of the NHS	Page 12
Roles in Health and social care	Page 13
Research task	Page 14
Frontline roles in Health and Social Care	Page 15
True or False	Page 16



What will I be studying?

This course allows you an insight in the many roles available within health and social care, from nurses to social workers to child care assistants and beyond, they have many key features that we shall explore and apply. You will be studying a range of units which will help you to gain skills that will be valuable in your chosen profession or future study. You will learn about the human body and mind alongside the changes across time. You will learn what it means to work in the sector and what qualities and skills you will need to develop by studying the following units:

UNIT 1: Human lifespan development

Discover theorists which interpret the physical, intellectual, emotional and social development across the human lifespan, factors affecting development, the effects of ageing and the impact of life events.

UNIT 2: Working in the health and social care sector

Explore what it is like to work in the health and social care sector, including the roles and responsibilities of workers and organisations who deliver care to meet the needs of service users.

UNIT 5: Meeting individual care and support needs

Focus on the principles and practicalities that underpin meeting individuals' care and support needs, and the challenges that must be overcome to provide effective care.

UNIT 14: Physiological Disorders and their Care

Explore types of physiological disorders, the procedures for diagnosis, and the development of a treatment plan and provision of support for service users

You will be assessed through completion of two external examinations and two pieces of internal coursework, which will combine to create an overall grade of pass, merit or distinction or distinction*.

NETFLIX

Babies



Marriage Story



Louis Theroux:
Extreme love,
Dementia



Five Feet
Apart



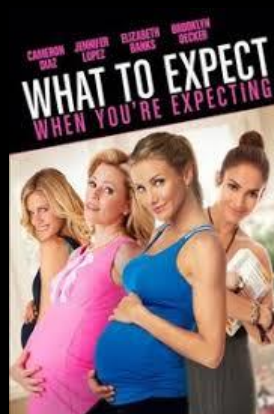
Brain on
Fire



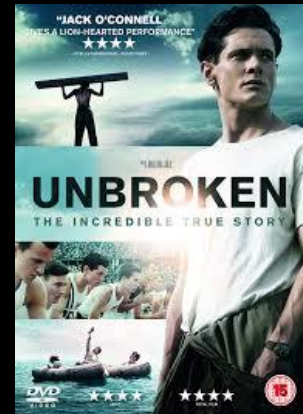
Theory of
Everything



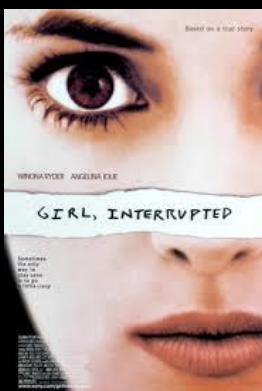
What to expect
when you're
expecting



Unbroken



Girl, interrupted



Call the
Midwife



The Children
Act



Pandemic: How to
prevent an
outbreak



Beyond NETFLIX

Elizabeth is Missing



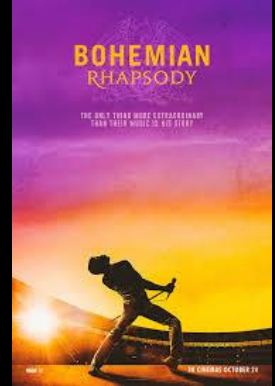
Rio & Kate: Becoming a Step family



Jesy Nelson: Odd one out



Bohemian Rhapsody



BBC iPlayer

DVD

Confessions of a Junior Doctor



Born to be different



Secret life of... Year Olds



Still Alice



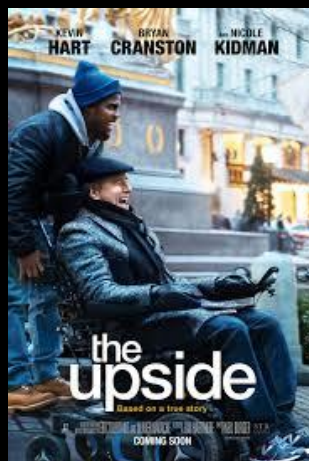
4 On Demand

DVD

The Children Act



The Upside



Beautiful Boy



Miss you Already



Amazon Prime

Recommended Watching for Health and Social Care⁴

The children's hospital

Documentary

The Children's Hospital

Documentary going behind the scenes at the Royal Aberdeen Children's Hospital.

4 Episodes Available



Start Watching

Series 2: Episode 1



Louis Theroux, Extreme love Autism

BBC
TWO



Louis Theroux

Extreme Love: 1. Autism



Hospital

BBC
TWO



Hospital

Series 7: Episode 2



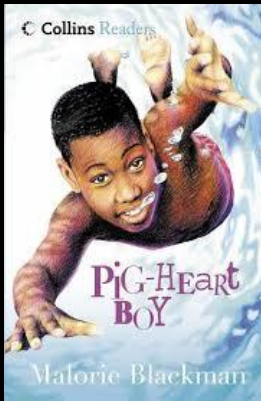
Contains upsetting scenes.



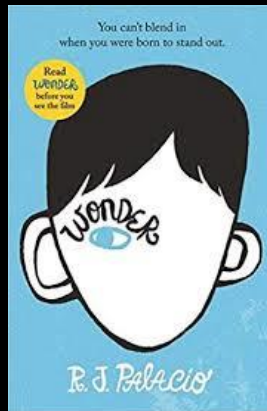


Further Reading

Pig Heart Boy by Malorie Blackman



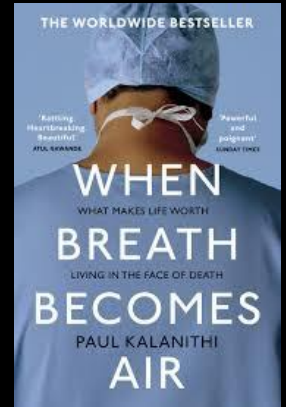
Wonder by R.J. Palacio



This is Going to Hurt by Adam Kay



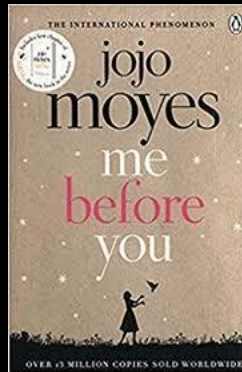
When Breathe becomes Air by Paul Kalanithi



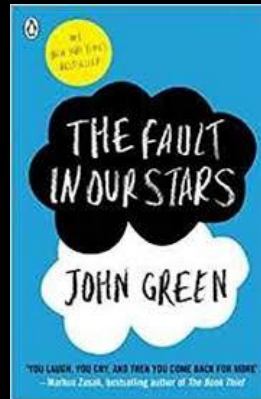
The Hate U Give by Angie Thomas



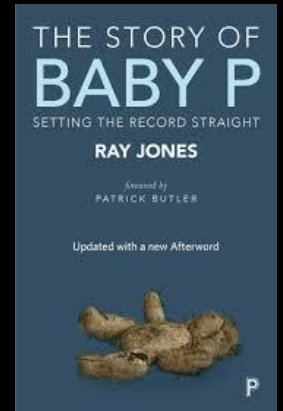
Me Before you by Jojo Moyes



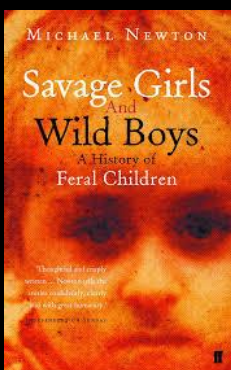
The Fault in Our Stars by John Green



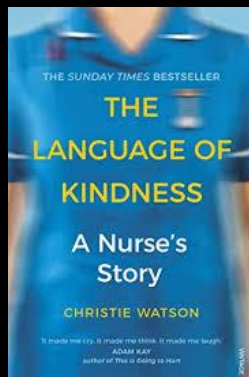
The Story of Baby P by Ray James



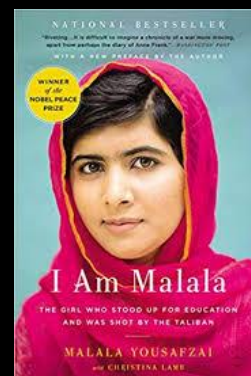
Savage Girls and Wild Boys by Michael Newton



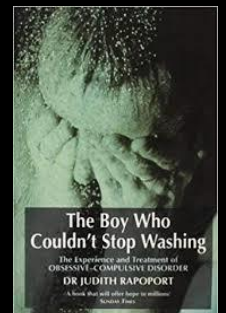
The Language of Kindness by Christie Watson



I am Malala by Malala Yousafzai



The Boy Who Couldn't Stop Washing by Dr Judith Rapoport

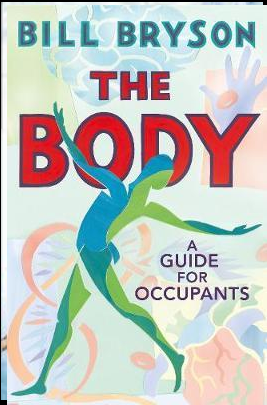


Recommended Reading for Health and Social Care
Yes some of these are also films, if you prefer!

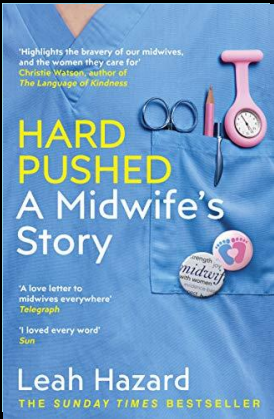


Further Reading

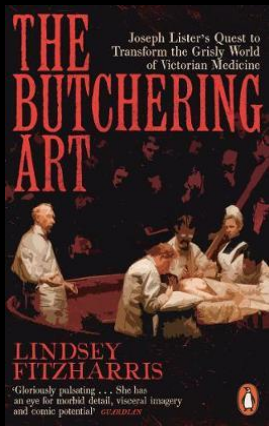
Bill Bryson- a guide for occupants



Hard Pushed- Leah Hazard



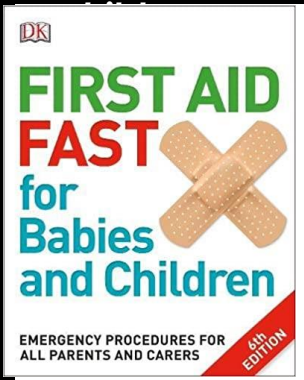
The Butchering Art- Lindsey Fitzharris



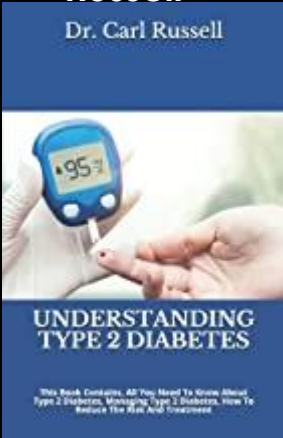
First Aid Made Easy- Nigel Barraclough



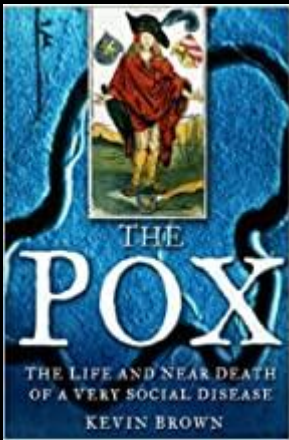
First Aid for babies and children



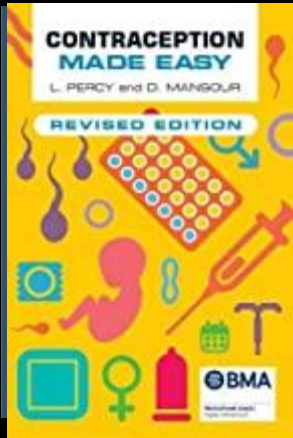
Understanding diabetes- Dr Carl Russell



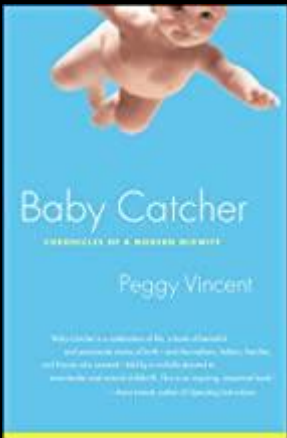
The Pox Kevin Brown



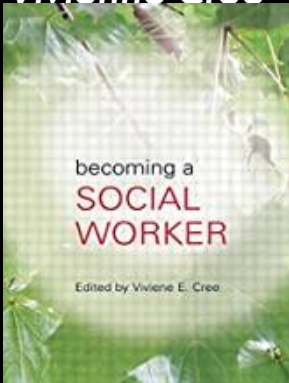
Contraception made easy Percy and Mansour



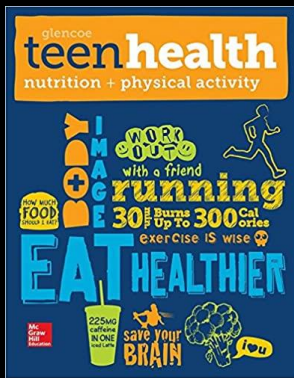
Baby Catcher- Peggy Vincent



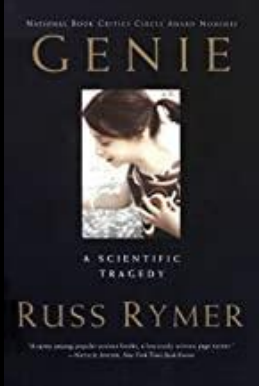
Becoming a Social worker- Vivienne Cree



Teen Health- McGraw Hill



Genie Russ Rvmer



Health and Social Care in the Media



The role played by health and social care providers is key in a healthy society- something we have learned about recently! One way in which public awareness is raised about health and social care in general and issues that exist within the health and social care sector is through the media.

Your task is to pick at least...

- 1 Film
- 1 Book
- 1 Documentary

You will then be asked to answer some questions relating to what you have watched/ read.

You must watch/read some of the examples on the previous slides you have picked and create notes by considering the following:

- What are the main life stages featured?
- What are the factors that have influenced the main characters growth and development?
 - Are there any specific needs featured?
- Describe the services seen/used that are featured and explain how?
 - Are there any quotes/scenes that stand out to you and why?
 - How effective is the stimulus in raising public awareness about Health/ and or social care Issues?

This list is NOT exhaustive there may be other questions/ideas you wish to consider as you watch or read.

Learning Log

Record here any additional reading/viewing you are undertaking in order to show what you have been completing in order to prepare you for the course. Use the reading list on the previous slides you have been given for guidance on what you could you watch/read.

Date	Title	Summary of content	My thoughts

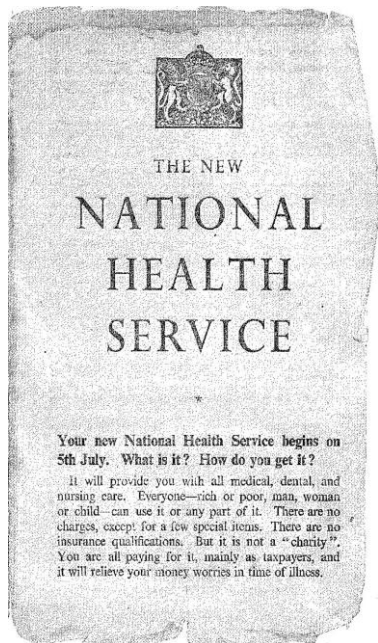
GLOSSARY

Task: Research and define the following words which are used throughout the course

Term	Definition
Adolescence	An important status change following the onset of puberty during which a young person develops from a child into a adult.
Advocate	
Attachment	
Care Treatment plan	
Clinical Commissioning Groups (CCGs)	
Development	
Discrimination	
Diversity	
Empathy	
Ethical	



Term	Definition
Fine Motor Skills	
Growth	
Holistic Approach	
Milestone	
Development	
Nurture	
Service user	
Safeguarding	
Self-Concept	
Theorist	



History of the NHS

Make a presentation outlining the history of the NHS

Include sections on:

- Healthcare before the NHS
- When/ why the NHS was produced
- What the NHS does
- Significance of the NHS
- How does healthcare differ in other countries



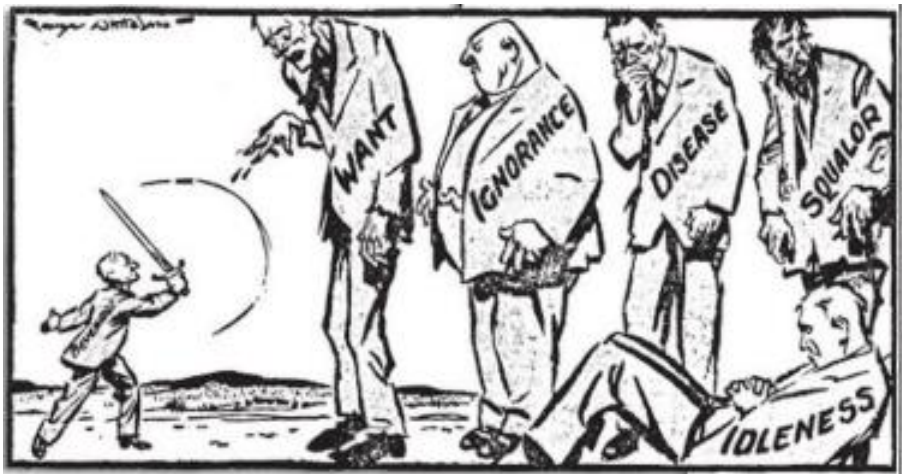
The Beveridge Report, 1942

In 1942, a plan had been presented by William Beveridge, a senior civil servant, detailing key areas for post-war reconstruction, aimed at establishing a national system of welfare for the people. It identified ‘five giants’ that were to be overcome: want, disease, ignorance, squalor and idleness.

When the Beveridge Report first appeared, it was welcomed by all the parties. There was broad agreement that protection needed to be provided for all members of society, and so when Labour came to power in 1945, they implemented the proposals in this report, thereby establishing the welfare state, a system which all governments after 1951 accepted in its essentials. This common acceptance became known as **consensus**.

Giant	The 1945 Labour Government's Solution
Want	To be ended by National Insurance. The National Insurance Act created a system whereby the government, employers and employees all paid for insurance which would pay out in the event of unemployment, sickness, maternity and retirement.
Disease	To be ended by a comprehensive health service. The National Health Service Act provided free medical and hospital treatment for all (the NHS).
Ignorance	To be ended by an effective education system. The Labour Party continued to support the Conservative's 1944 Butler Education Act which provided free education within grammar schools, technical schools or secondary schools.
Squalor	To be ended by slum clearance and rehousing
Idleness	To be ended by full employment

The idealism that inspired the government's welfare programme came at a heavy financial cost, which added to the financial burdens it inherited in 1945.



Research a list of Health and Social Care jobs/ medical terms for each letter of the alphabet



A
B
C
D
E
F
G
H
I
J
K
L
M

N
O
P
Q
R
S
T
U
V
W
X
Y
Z

Research task



Chose a professional from the following:

- Midwife
- Paramedic
- Paediatric nurse
- Nutritionist
- Physiotherapist

Or you could choose your own health and social care role if you prefer.

Create a fact file for your chosen job role

To include:

- A day in the life of.....
- General roles and responsibilities
- Routes into the role/ qualifications required
 - Skills & qualities
 - Average pay
 - Where they work
- What age groups they work with
- What specific needs they work with
- What health bodies they have to be registered with in order to practice

And anything else you think may be suitable



On 'The front line'

- What does it mean when people talk about being 'on the front line'?

Government declares a 'pandemic'

- What does it mean when people talk about the situation as a pandemic?

Job Role	Definition	Roles and Responsibilities	How do they respond in a pandemic?
District Nurse			
Auxiliary Nurse			
Palliative Care			
Phlebotomist			
Domiciliary Carer			
Adult Social Worker			



True or False?

Colour code the statements in order to show if they are true or false.



False

